



WELCOME TO THE *SURREAL* WORLD

The Slate is a tribute to Phuket's tin mining history and the Na-Ranong family's role in that once flourishing trade. The Slate manifests an avant-garde expression of Phuket heritage, its rich culture and traditions with bold design and fearless imagination. A place where family legacy meets raw design, industrial beauty interrupts with unexpected elements.



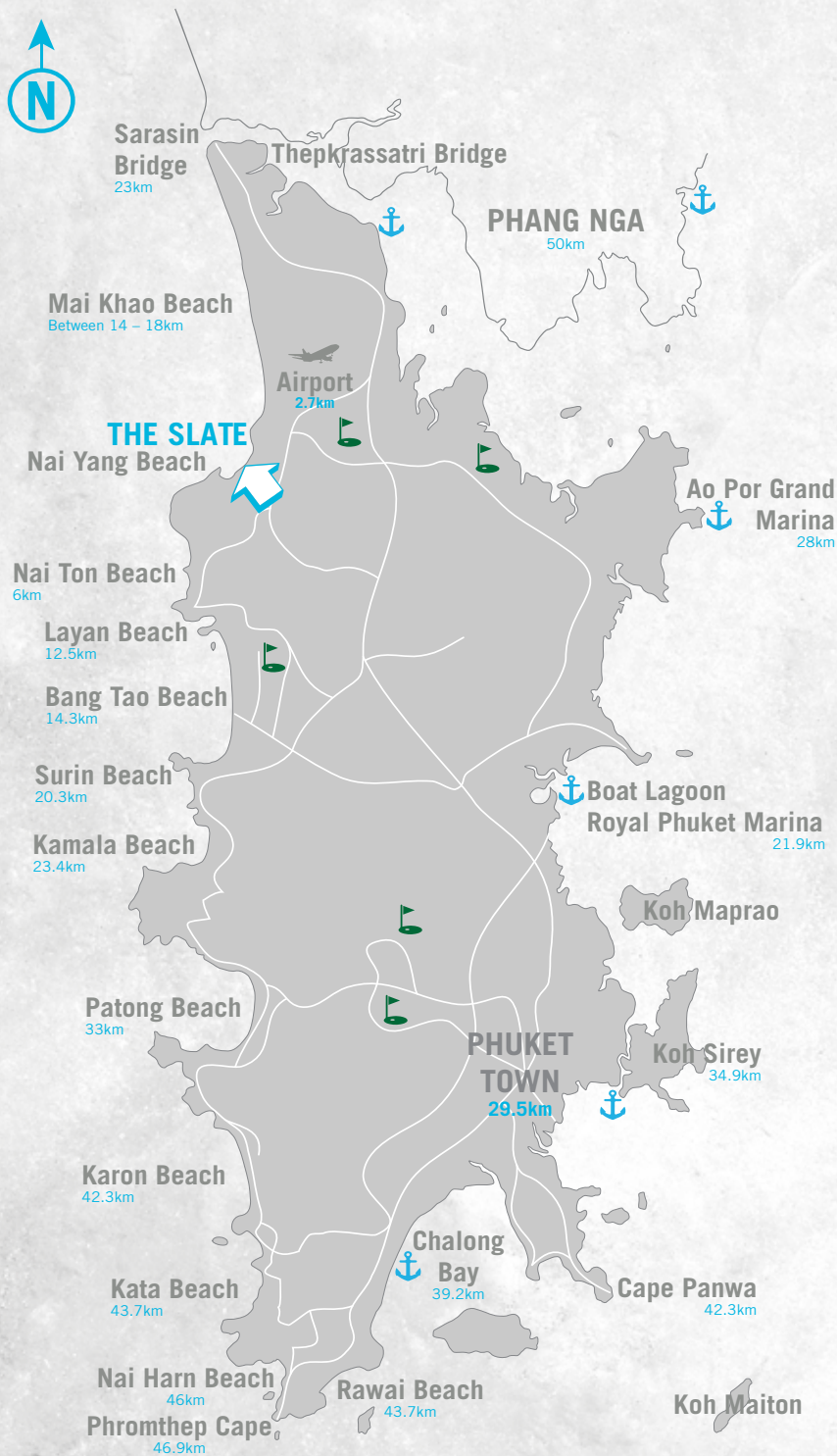
CONCIERGE

WELCOME
TO
THE
LOUNGE

THE RESORT

An exceptional business events venue, The Slate is nestled in its private paradise adjacent to unspoiled Nai Yang Beach and a short drive from Phuket International Airport. The 'all villa, all suite' property offers 209 accommodation choices including seven private pool villas, eight restaurants and bars, flexible indoor and al fresco event spaces, three outdoor pools, tennis court, a private beach club and award-winning Coqoon Spa.






IT'S ALL ABOUT THE LOCATION

Beside the tranquil shores of Nai Yang and surrounded by protected Sirinat National Park, The Slate is a short drive from Phuket International Airport - perfect for your event planing. We're 10-15 minutes away from award-winning Blue Canyon and renowned Mission Hills golf courses as well as private charter ports such as Yacht Haven and Ao Por Grand Marina for all your island cruises, whilst Phuket's main highway grants relatively quick access to historical Phuket Town and tourist centre, Patong Beach.

Throughout the property, eight different outlets perfect for hosting lavish lunches or delectable dinners. From the Southern Thai cuisine of our award-winning Black Ginger to the fused Asian flavours of Rivet, the Tongkah Tin Syndicate's heritage-rich billiards and snooker tavern or the beachside cocktails served atop Shore Thing. If you can't see intriguing possibilities, you may be in the wrong resort.

1. Lobby
2. Tin Mine
3. Moo's Kitchen, Heliconia, Blue Diamond & Stockroom
4. Dirty Monstera
- 4.1 Tongkah Hall (Meeting and Function Room)
- 4.2 Jomon Pavilion & Broome Function Rooms
5. Family Pool / Kids Pool / Pool 1 / Underground Café
6. Rivet & Rebar
7. Coliseum Garden & Stage
8. Experience Centre / Diving Centre
9. Shore Thing Beach Club

10. Infinity Pool / Pool 3 (Adults Only, Ages 14-up)
11. Pulley Bar / Pool 2 (Adults Only, Ages 16-up)
12. Tin Box Kids Club
13. Fitness Studio / Yoga Hall
14. Tennis Courts
15. Tongkah Tin Syndicate
16. Coqoon Spa
17. Black Ginger
18. First Aid Room 
- 19-24. Private Pool Villas



THE SLATE
A PHUKET PEARL RESORT

RESORT MAP

STAY

The 'all villa, all suite' ultra-chic property offers 209 accommodation choices including seven private pool villas – all lavishly furnished, as an homage to Phuket's tin mining heritage. Famed architect Bill Bensley has interwoven the unmistakable elegance of Phuket's tradition with his own contemporary magic to create an inspired setting.





Indigo Studio

Suffused with luxurious details, quaint and modest. Wooden floors juxtaposed with metal and glass. INTIMATE settings – each room with a balcony overlooking the abundant gardens and central lagoons. Textural contrasts throughout the interior. Modern style imbued with intrigue with locally-crafted furnishings.

Size: 35 sqm **Availability:** 24 Studios

D-Buk Suites

An unusual blend of rich colours, intriguing forms and BOLD artistry, the D-Buk Suite is your voyage into an alternate reality. Here, you wake up in a plush, oversized bed and start the day with a relaxing soak in a sleek, charcoal-black bathtub. Enjoy the tropical atmosphere with your family and enjoy a drink on your daybed or terrace while leafy trees provide a colourful canopy.

Size: 76 sqm **Availability:** 42 Suites



Pearl Bed Suites


Plunge through the magical portal and enter a world of contrasts. The vast space features smooth concrete and polished dark wooden floors covered by handcrafted rugs in rich hues of scarlet and royal blue. Breathe in the tantalizing aroma of orchids in bloom. Step out onto your private balcony and enjoy sweeping views of tropical flora.

Size: 56 to 65 sqm **Availability:** 94 Suites

Pool Suites

An imaginative interplay of form and colour, the Pool Suite is an intimate and exotic world of LUMINESCENT blues. Laze the day away beneath lush trees in your own garden courtyard or luxuriate in the cool waters of your private plunge pool. Decadently furnished with gorgeous rich wood, it's a blissful escape that exudes majestic elegance and modern artistry.

Size: 112 sqm **Availability:** 35 Suites



Pearl Shell Suites

One-bedroom Suites

Awhimsical world with lavish flower arrangements and garden-inspired murals, the Pearl Shell Suite is a DREAMSCAPE of stunning art. Accoutred in warm, rich wood and metallic touches, the suite exudes natural beauty and sensuous elegance. Ensnore yourself in one of the floral, upholstered armchairs and take in the sweeping views of the lush rainforest. Or sink into a soothing spa setting in the comfort your own tranquil haven. All the ease and luxury are yours.

Size: 132 sqm **Availability:** 4 Suites

Pearl Shell Suites

Two-bedroom Suites

A mesh of bright, nautical blue and eggshell white, the suite complements the panoramic views of triacal lush. Luxuriate in your very own sunken terrace Jacuzzi as the balmy breeze plays with your hair. Enjoy a soothing in-room sauna so indulgent you can almost taste the satisfaction. Or take a leisurely stroll in your own private gallery and feast your eyes on vibrant works of art.

Size: 232 sqm **Availability:** 2 Suite

The Bensley Suite

Surrounded by lush greenery and calm waters, the Bensley Suite is a sublime sanctuary of nature and peace. The BRILLIANT contrast between tasteful flower arrangements and rich dark wood furnishings adds sophisticated warmth to this dreamland. Retreat to your private enchanted garden and ease into a sun lounger while nibbling on exotic fruits. As the sky blooms into a sunset, take a dip in your private pool or enjoy a relaxing in your private enchanted garden and ease into a sun lounger while nibbling on exotic fruits.

Size: 504 sqm **Availability:** 1 Suite

Private Pool Villas

Make your grand entrance to this surreal world of breathtaking art and enchanting natural beauty. A fanciful blend of nature, art and luxury, the private pool villa offers an otherworldly experience. Wake up in a cloud-like, oversized bed to the soft chirping of tropical birds. Cool off in your private pool or lounge in your striped sofa out on your sun terrace. A burbling Jacuzzi, the swaying palms and sweeping coastal skies – enchant your soul with idyllic artistry and abundant nature.

Size: 650-2,500 sqm **Availability:** 7 Villas

MEETINGS AND EVENTS

From intimate meetings and casual resort dining to grand-scale presentations, international conferences, exhibitions, gala dinners, banquets, and balls. Whatever the occasion, The Slate's multifunctional and flexible event spaces, both indoors and al fresco, give organisers a world of possibilities.



THE FACILITIES FOR MEETINGS AND EVENTS

The perfect combination of Thai inspiration and international sophistication makes The Slate a distinctive host for business conferences, banquets and events of all kinds. The expansive grounds host a vast array of state-of-the-art facilities surrounded by tropical forest and tranquil lotus ponds.

An extensive selection of venues for meetings of all sizes. Cutting-edge technical equipment and support facilities. LCD projection. A programmable stage lighting system. Large scale presentation screen and much more.

Centralise in the grand ballroom, Tongkah Hall. Vast and column-free, 550 sqm divideable into two separate soundproof rooms (200sqm / 350sqm).

Get intense with smaller groups in the nine additional Break-Out Rooms. Ranging in size from 35 sqm to 130 sqm.

Take it outside and enjoy the landscape and beautiful weather on the Coliseum Lawn where is able to accomodating up to 500 guests.

Enjoy complete secretarial services and the benefit of The Slate's experienced events services team.

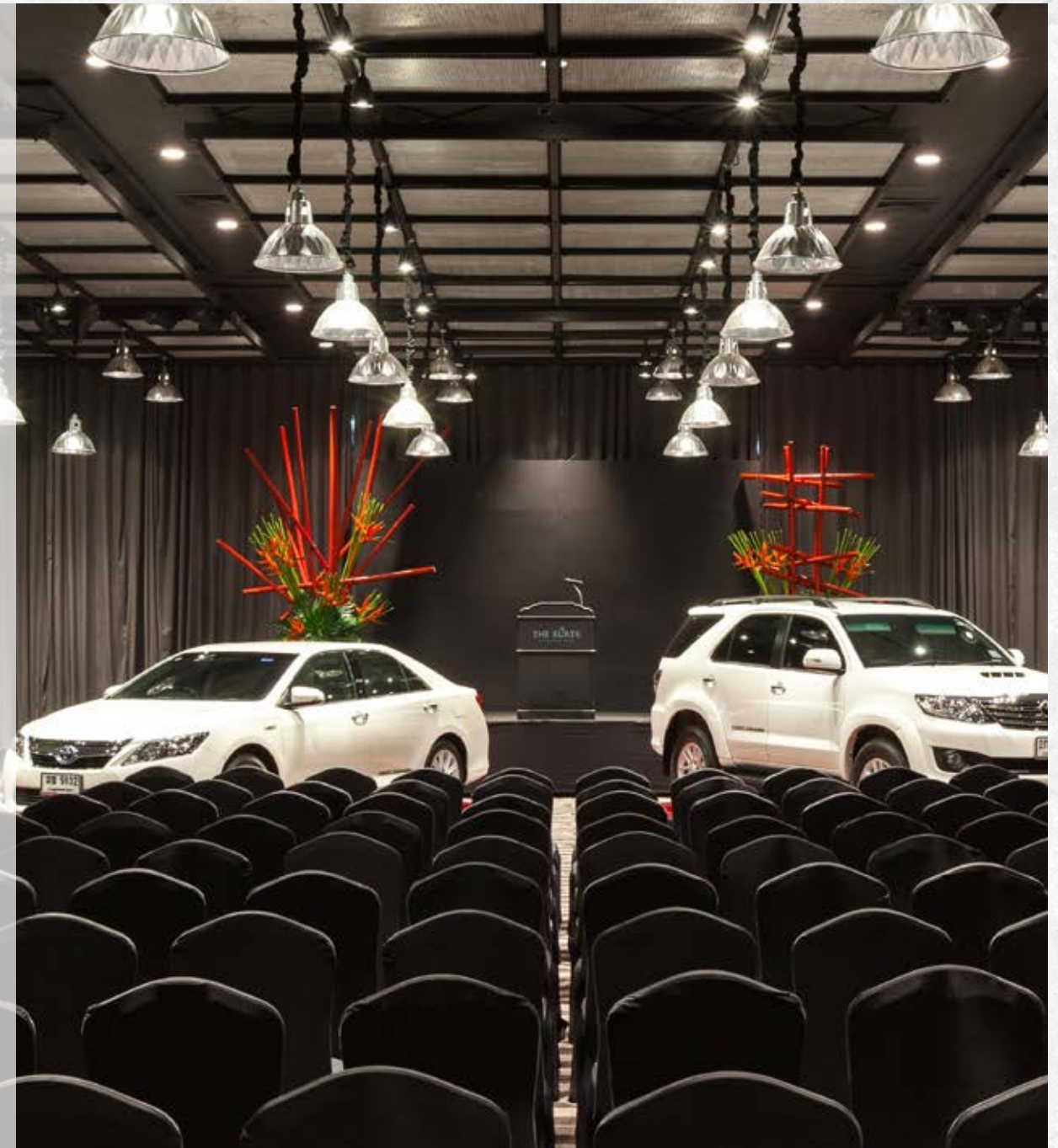
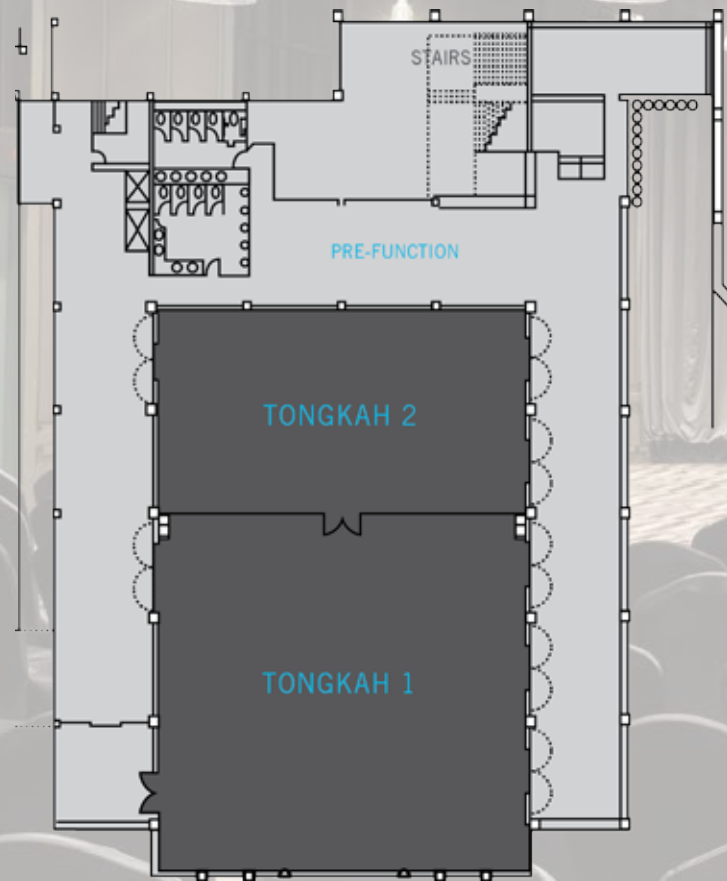


CAPACITY OF FUNCTION ROOMS

Room	L x W x H (m.)	Sqm.	Theatre	U-Shape	Rounds	Classroom	Cabaret	Boardroom
Tongkha 1 & 2	27.5 x 20 x 4.2	550	550	140	350	260	160	120
Tongkha 1	17.5 x 20 x 4.2	350	300	80	220	175	100	80
Tongkha 2	10 x 20 x 4.2	200	150	60	110	80	60	40
Jomon Pavillion	15 x 15 x 3.55	225	200	50	100	160	60	30
Mabe Suite	17.4 x 7.6 x 3	130	100	40	60	80	60	40
Broome 1, 2 & 3	10 x 20 x 2.4	200	150	45	80	80	58	50
Broome 1	10 x 10 x 2.4	100	80	30	50	40	30	30
Broome 2	10 x 4.6 x 2.4	50	25	N/A	16	40	10	15
Broome 3	10 x 5 x 2.4	50	30	N/A	20	20	12	15

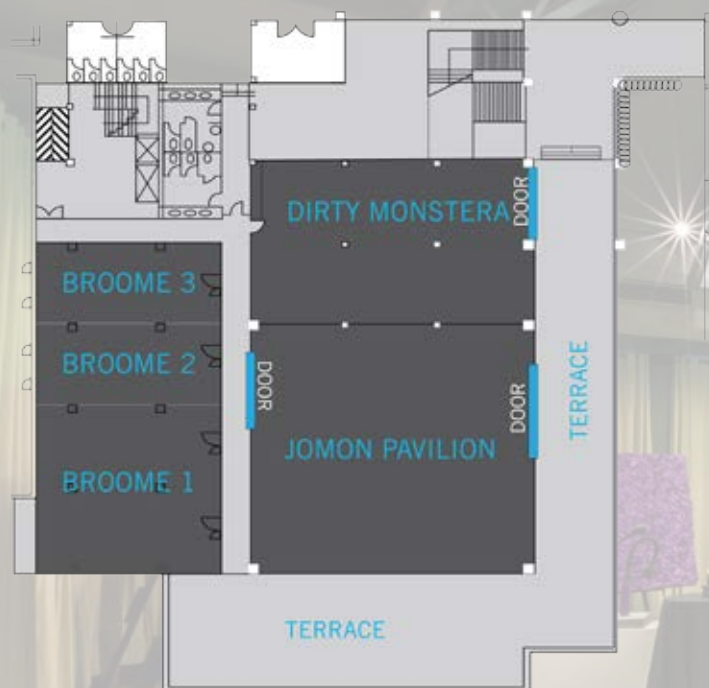
TONGKAH HALL

The pillarless Ballroom is a perfect venue for meetings, conferences and special dinners. Conveniently located on the lower level and has high ceilings. The Ballroom is occupied 550 sqm and divideable in to two exclusive soundproof rooms by 200 sqm and 350 sqm. Additional private terrace and pre-function area make it perfect room for group registration, a board meeting or an intimate luncheon and theme dinner. This event space can accommodate up to 500 people.



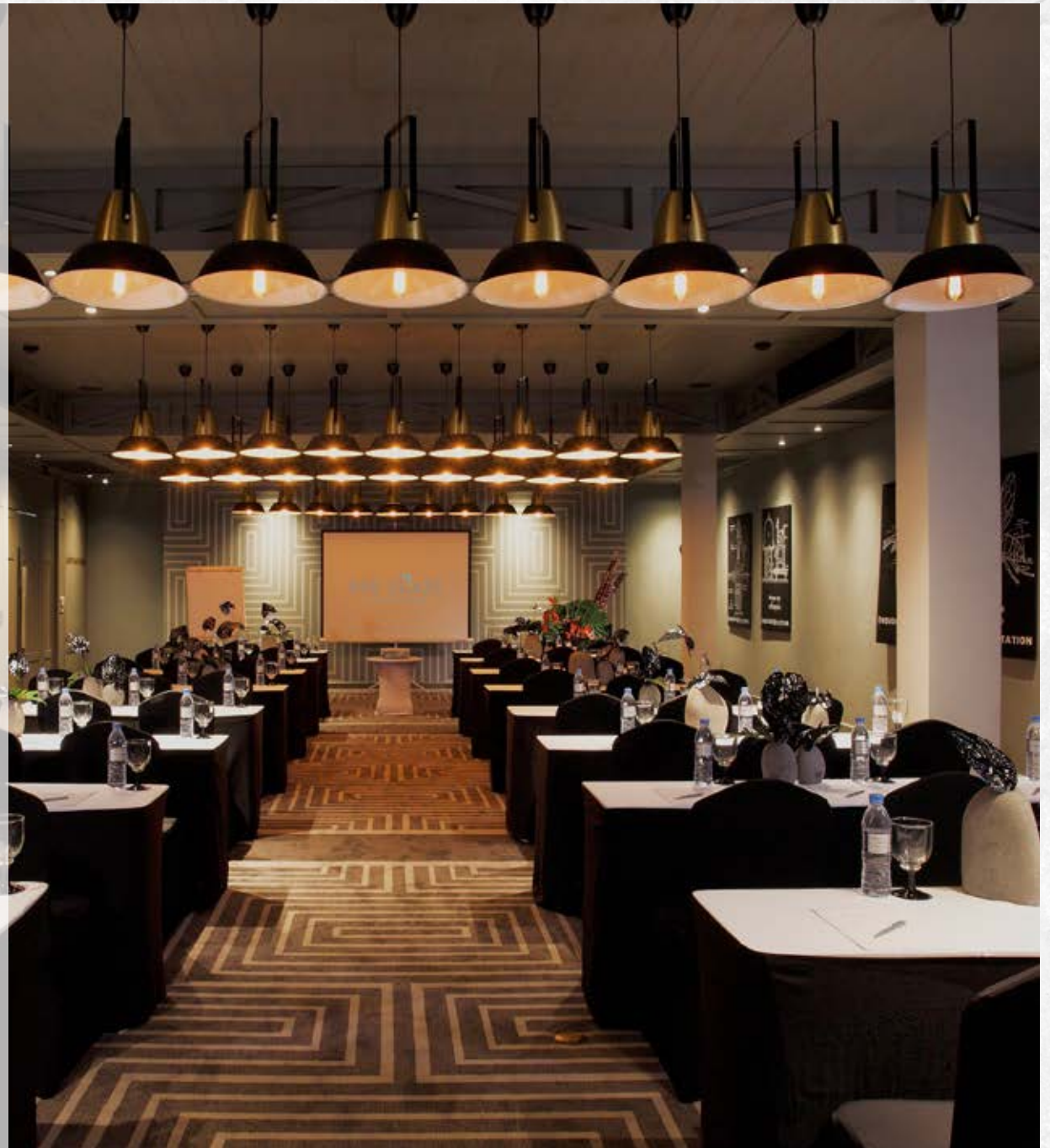
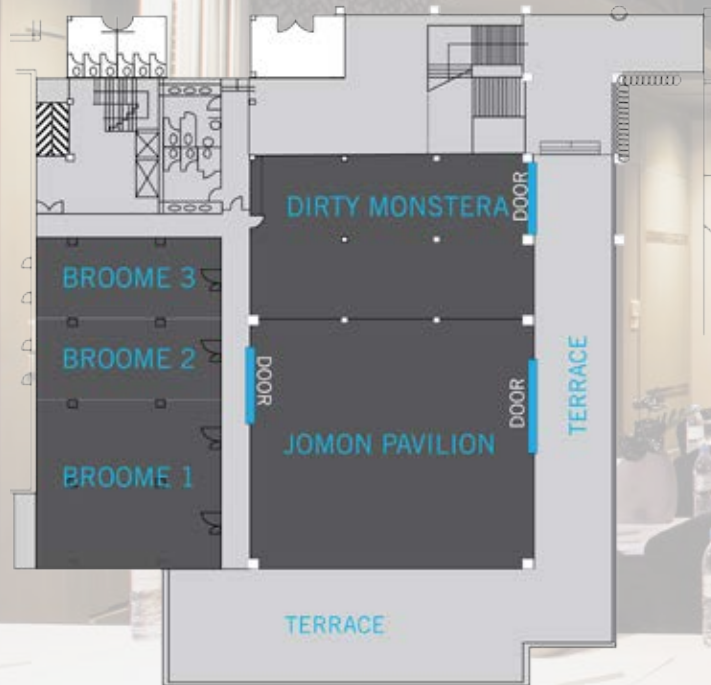
JOMON PAVILLION

Naturally lit along two sides and emboldened by lavish design. Encounter surprises in every corner of the Jomon Pavilion (225 sqm), where bright ideas meet expert service. Intimate locales boasting high ceilings, with limitless possibilities for entertainin and connecting to the Dirty Monstera lounge. Set your next event in motion, outfitted with state-of-the-art meeting facilities that inspire and impress.



BROOME

Take your event to the next level in Broome 1, 2 and 3, offering smart dividable breakout spaces ranging from 50 to 100 sqm. for the ultimate in flexibility. A perfect fusion of style and comfort, inspiring collaboration and innovative thinking. Experience the open terrace, offer sprawling views of the greenery.



MABE SUITE

Retreat into the blissful privacy of Mabe Suite, a haven for executive meetings and intimate events. In a setting of exclusivity, feel the spirit of Thailand in every detail. Let your guests revel in the artistic flourishes and warm ambiance of this artfully appointed space, with 130 sqm to indulge.

STAFF SERVICE
ROOM

DOOR

MABE SUITE

DOOR

SMALL
STAGE



COLISEUM GARDEN

Take in the beauty of nature at the tiered Coliseum Garden, a scenic event space with panoramic views. Ideal for cocktails and galas, let your guests meander through the garden, or mingle under the modular marquees as day turns to night. Surrounded by verdant greens, this tented and alfresco venue is a particular highlight of The Slate's stunning events offering.



EVERYWHERE IS YOUR EVENT

Break out of the boardroom and INSPIRE your team. From brainstorming on the beach, to green season boardshort boardroom meetings that go long on art.

Let's give them something to talk-about. From Hollywood glitz to traditional Thai dance, from haute couture catwalk shoes to magnificent soirees for movers and shakers.



FACILITIES AND EXPERIENCES

The Slate specialises in crafting authentic dishes with deliciously nutritious ingredients that draw on the Earth's organic goodness. Enjoy gourmet dining in spectacular settings and culinary MASTERPIECES that nourish and inspire.



DINING

The Slate specialises in crafting authentic dishes with *deliciously* nutritious ingredients that draw on the Earth's organic goodness. Eight distinct venues with thier own style and taste are perfect for exclusive and private events. Enjoy gourmet dining in spectacular settings and culinary **MASTERPIECES** that nourish and inspire.

Black Ginger – Experience the *true* tastes of Phuket. Discover bygone local dishes through a *symphony* of authentic flavours with fresh, home-grown ingredients.

Rivet & Rebar – Serving up contemporary Asian cuisines, Rivet offers an exciting blend of tastes and spices. For sensational sips and scrumptious sushi bites, hop over to Rebar

Tin Mine – Grill house and a variety of international cuisines served alfresco, including vast breakfast buffets and performance cooking in an industrial-chic environment.

Tongkah Tin Syndicate – Snooker hall and *stylish* sips. Soothe your soul with rare whiskies and craft cocktails.

Underground Café – Open-air venue by the water's edge. Indulge in healthy options including fresh salads, cold-pressed juices and fruits – every morsel sweetened by Mother Nature.

Shore Thing – Charm your palate with *crisp*, oven-baked pizzas and fantastical sunset cocktails.

Dirty Monstera – A delectable spread of luscious lunch bites and *fresh* ground coffee and *tasty* sweet treats. Take rich, sinful forkfuls of a decadent dessert while you enjoy a classic film.

Dine Around – Have an enjoyable *gastronomic* experience by combining several venues over one meal; cocktails at Shore Thing, starters and main course at Rivet or Black Ginger and ending with a digestif at Tongkah Tin Syndicate



COQOON SPA

Enveloped in the healing cocoon of nature, each suite is a relaxing spa haven. Sink into an extraordinary setting and spoil yourself with a soothing treatment at the Coqoon Spa. Delight in a deep-tissue massage as the balmy breeze caresses your skin, and birds chirp away above.

RECREATION & ACTIVITIES

The Slate Academy offers a myriad of activities for you to explore beyond the shimmering shores. Exclusively designed cultural and lifestyle experiences for both adult and children allure for deeper insight and appreciation of this magical island.

Golf - Numerous world-class golf courses located around the Island, from the championship courses of Blue Canyon to the award-winning designs of Mission Hills and Laguna Golf.

Shopping within easy reach to Central Festival shopping mall in Phuket Town and Jung Ceylon in Patong which offer a wide variety of stylish and high quality international retailers.

Local Life - Tour local markets to buy ingredients for a Master Chef cook off, trek through virgin jungles to bicycle trips around the surrounding villages and countryside.

FACILITIES

Three swimming pools – one family pool and two adult-only pools

Fitness studio with professional instructors for one to one training, two tennis courts and on-site dive centre

Tin Box – Kids' courts with indoor and outdoor activities

Moo's Kitchen – Signature Thai cooking school

Stockroom & Blue Diamond which offer unique home décor and exquisitely crafted jewellery & everything you need from sunscreen to sunnies and batteries

Shades – an Art Quarter which showcases paintings, sculptures and photography from global artists



THE THEMES

What separates a regular dinner and a grand event is often a fanciful theme, be it a small touch like party hats, or a full-blown extravaganza of details to draw you into a different world, immersing you in the spirit of the moment.



OUTDOOR ELEGANCE

Enjoy the full radiance of our resort's lush locale in a range of unforgettable outdoor venues. Our tiered Coliseum garden, Black Ginger Terrace, poolside and Shore Thing, directly overlooking the beachfront, offer a wonderful setting for early evening cocktails or an alfresco dinner. Enveloped by nature with tropical trees and nestled close by the protected Sirinat National Park, The Slate's spacious and flexible event venues offer inspired and dramatic settings for spectacular themed and gala dinners.

THEMED DINNERS

We offer a variety of themed events to suit any occasion, especially for conferences and incentive groups. Imagine sipping on cocktails at The Shore Line, as the sun sets over Nai Yang Beach. Conversation over cocktails ahead of an awards ceremony during a night of Glitz and Glamour. At the Grand Ballroom - Tongka Hall, walk the red carpet, and experience all the excitement of an awards ceremony at a concept evening that encapsulates elegance with a black and gold backdrop, celebrating the success of your corporate stars.

Or present Phuket's Heritage as you transport your guests to a bygone era when Phuket was a prosperous island of tin mining and fishing communities. Let your guests marvel at the cultural décor and candlelit atmosphere as they enjoy a local flavoured menu and performances presenting Phuket's rich historic past.

If you have a dream or a theme for your event, our team can create a bespoke themed evening, especially for you. And with numerous indoor and outdoor spaces available, The Slate provides the perfect setting for any occasion, from intimate gatherings to much larger formal events. Expect flawlessly executed cocktail parties, lavish buffets and banquets that our professional team helps to run smoothly and efficiently.

Some of the creative themed events we can stage for you include:

- Phuket Heritage
- Fisherman's Village
- Pirates of Phuket
- Glitz & Glamour
- Roaring Twenties
- Colours of Thailand



CIRQUE



EVENTS GALLERY

So many possibilities with many made into reality: this is our showcase of one-of-a-kind and truly inspiring events for the biggest brands both local and international that could only be conceived here at The Slate.







KASPERSKY Lab



MOGAS
SEVERE SERVICE BALL VALVES

STIHL®

AirAsia



D&R
Touristik



SIEMENS



HOYA



TOYOTA



THE SLATE

A PHUKET PEARL RESORT

Nai Yang Beach, Phuket 83110, Thailand

T: +66(0) 76 327 006 F: +66(0) 76 327 338-9 E: events@theslatephuket.com

www.theslatephuket.com

